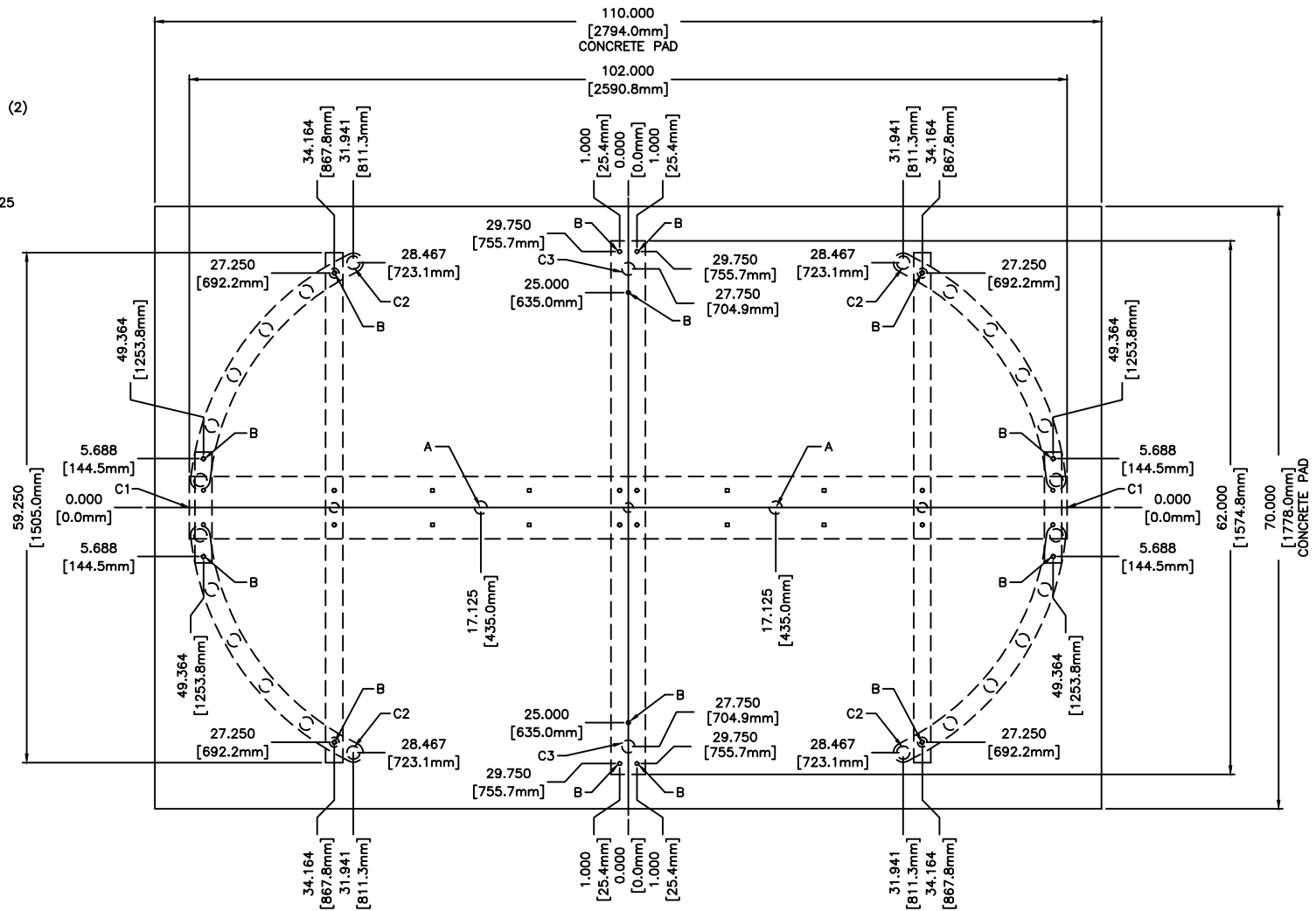
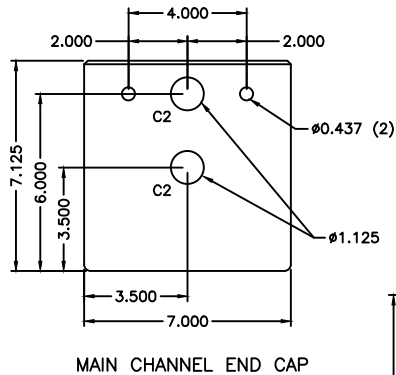


FOR USE ON GALVANIZED OR POWDER COATED
DS430-T MODELS



1. ALL DIMENSIONS ARE APPROXIMATE
2. DIMENSIONS ARE IN INCHES (mm)
3. DO NOT SCALE DRAWING

ANCHOR POINTS

A= $\phi .625$ X 4.500 STAINLESS STEEL CONCRETE ANCHOR QTY 2
B= $\phi .375$ X 4.500 STAINLESS STEEL CONCRETE ANCHOR QTY 12

SUGGESTED CONDUIT LOCATION

C1 = THROUGH MAIN CHANNEL END CAP (TYP BOTH SIDES)
C2 = THROUGH VERTICAL YOKE TUBE
C3 = THROUGH BARRIER VERTICALS

CONCRETE PAD NOTE:

POUR PAD 4.000 [101.6mm] - 6.000 [152.4mm] THICK,
AND INSURE IT IS LEVEL $\pm .125$ [3.1mm]

DSI CONFIDENTIAL
PROPRIETARY INFORMATION
This document and the data disclosed
herein is not to be reproduced, used, or
disclosed in whole or in part without
the permission of DESIGNED SECURITY INC.

MATERIAL:	SCALE: 1 = 20	APPROVED BY:	DRAWN BY: LC III
N/A	DATE: 1/10/18		REVISED: 10/2018
FINISH:			
TOL. UNLESS OTHERWISE SPEC.	330-273-6185		
.X ± .1 .XXX ± .015	FAX 330-273-4468		
.XX ± .03 ANGLES .5°	USA 1-800-942-0829		
	FAX 1-800-942-0828		
	DS430-T-GV\PC ANCHOR POINTS\CONDUIT 2018		

DS430-T-GV\PC ANCHOR POINTS\CONDUIT 2018