

- NOTES:
1. DIMENSIONS SHOWN IN INCHES AND [mm].
  2. 5/8" STOP SHOWN.
  3. 12 GAGE REINFORCEMENT PLATE INSIDE DOOR IS RECOMMENDED AT DEVICE MOUNTING LOCATION.
  4. FOR RHR SEE TEMPLATE T2114.

HDG. \_\_\_\_\_ DR. \_\_\_\_\_

**RESPONSIBILITY**

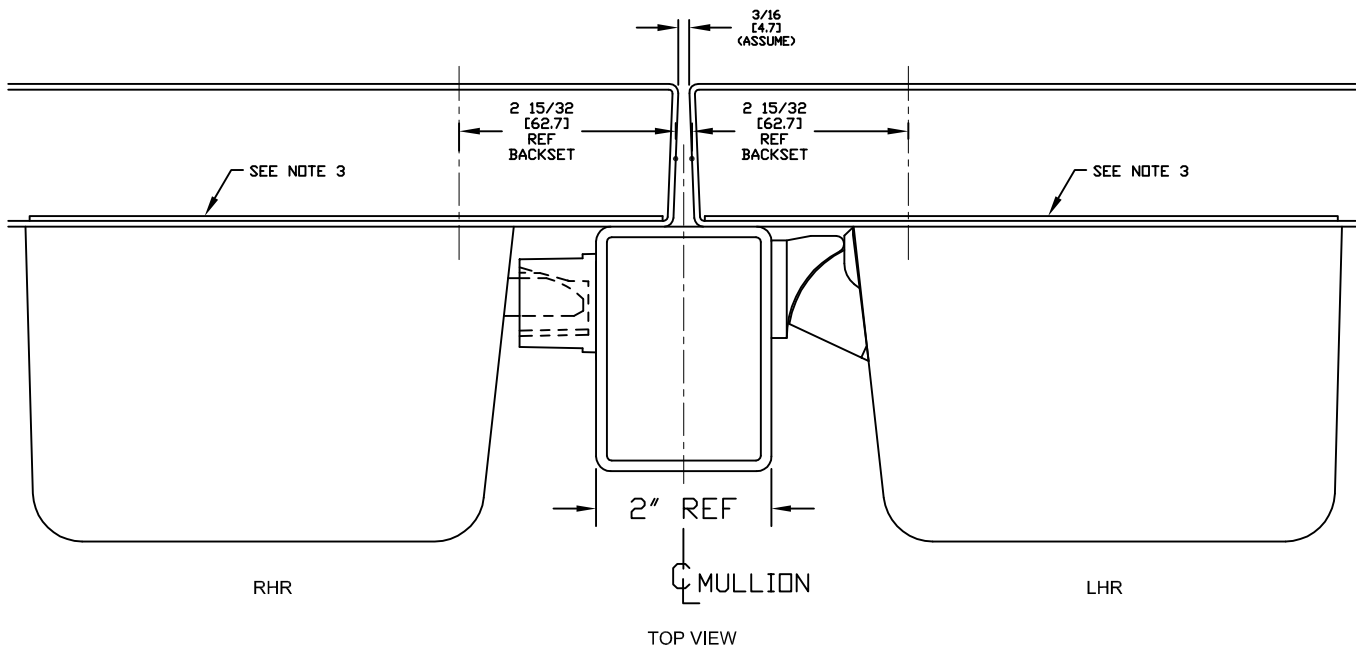
Door and Frame Manufacturers are responsible for providing adequate construction or reinforcements for proper installation of hardware shown. All architectural builders hardware must be installed on properly reinforced doors and frames regardless of the type, material or method of construction.

TEMPLATE  
METAL DOOR  
ECL-600, LHR  
NO TRIM

**DETEX CORPORATION**

DO NOT SCALE DRAWING

DATE 6-12-17 TEMPLATE NUMBER T2113 page 1 of 2



HDG. \_\_\_\_\_ DR. \_\_\_\_\_

**RESPONSIBILITY**  
 Door and Frame Manufacturers are responsible for providing adequate construction or reinforcements for proper installation of hardware shown. All architectural builders hardware must be installed on properly reinforced doors and frames regardless of the type, material or method of construction.

TEMPLATE  
 METAL DOOR  
 ECL-600, LHR  
 NO TRIM

**DETEX**  
 CORPORATION

DO NOT SCALE DRAWING

DATE	6-12-17	TEMPLATE NUMBER	T2113 page 2 of 2
------	---------	-----------------	-------------------