

Reference Dimensions

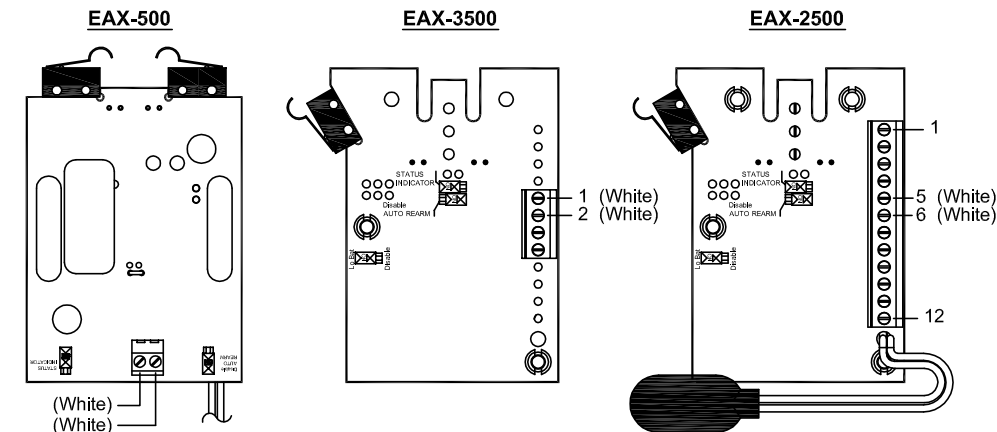
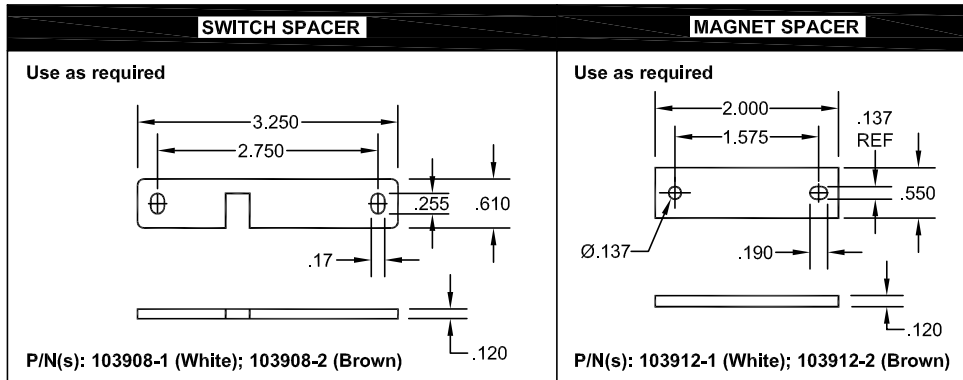
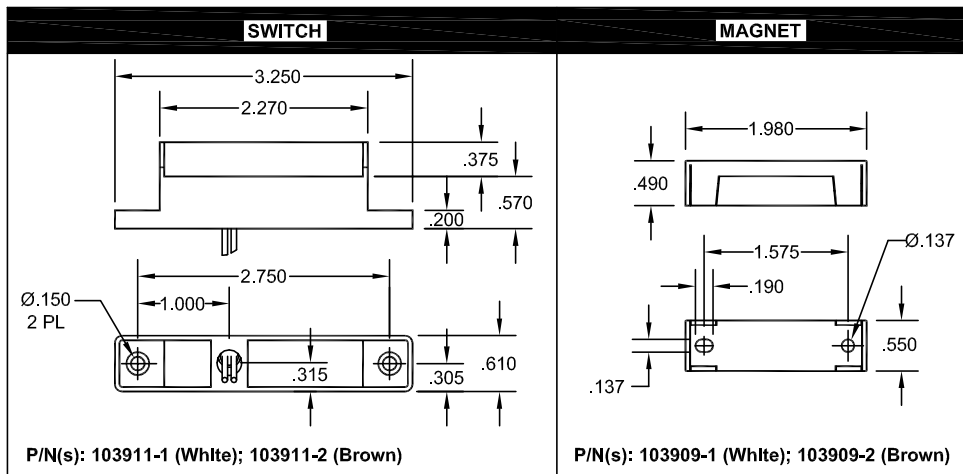


Figure 1. Wiring Diagram for Detex products

**NOTE:** These MS products operate optimally with the recommended air gaps. See opposite side for installation details.

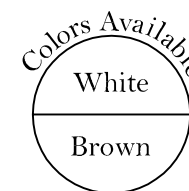
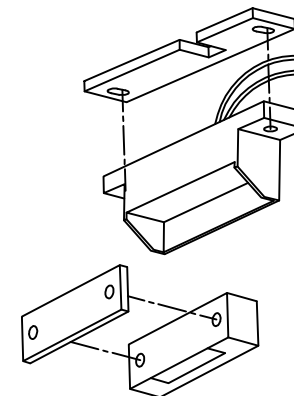


**High Security  
Magnetic Switch**  
(Uses Magnasphere technology)  
MAGNASPHERE®

Hermetically Sealed Switches Contact Material Gold/Gold High Grade Magnets

1 Per  
Assembly

- Anti-Tamper Design
- Polarity Selection is Non-Critical
- Mounting Screws Included
- Durable Magnet
- Simple Installation
- Multiple Colors
- Max. Contact Rating  
30VDC @ 250mA

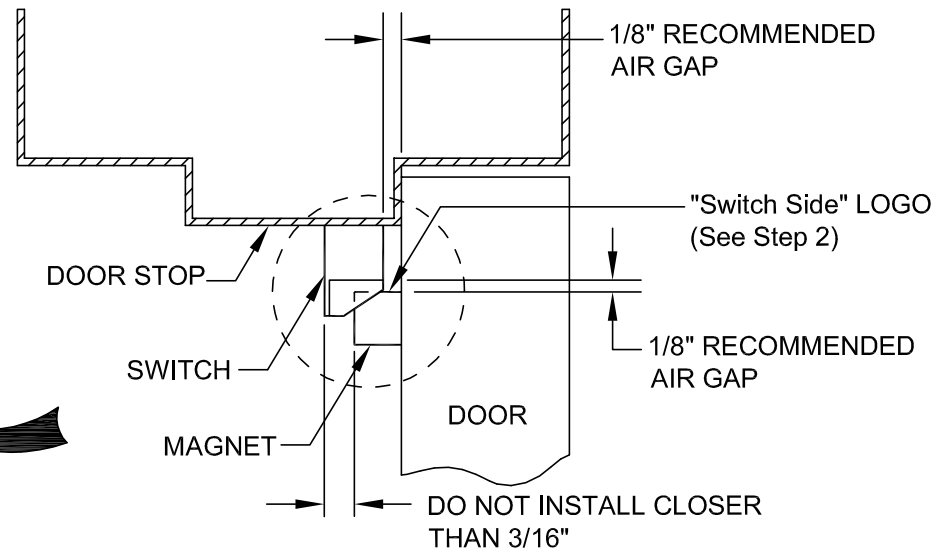
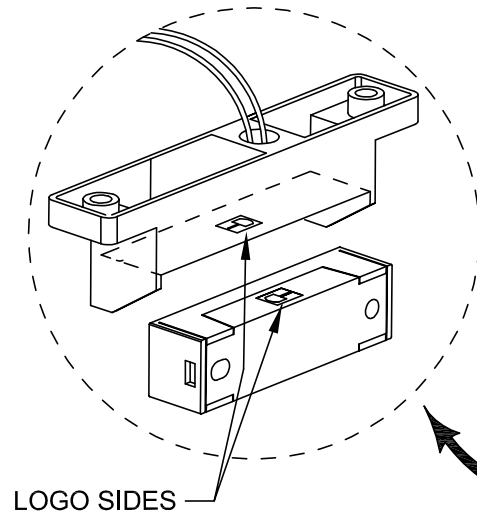


- Model MS-1039S**  
White, Magnetic Switch,  
Surface Mount,  
Wire Leads
- Model MS-1059S**  
Brown, Magnetic Switch,  
Surface Mount,  
Wire Leads

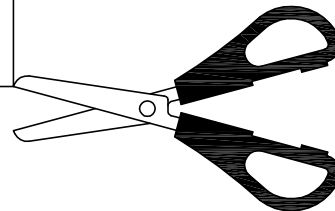
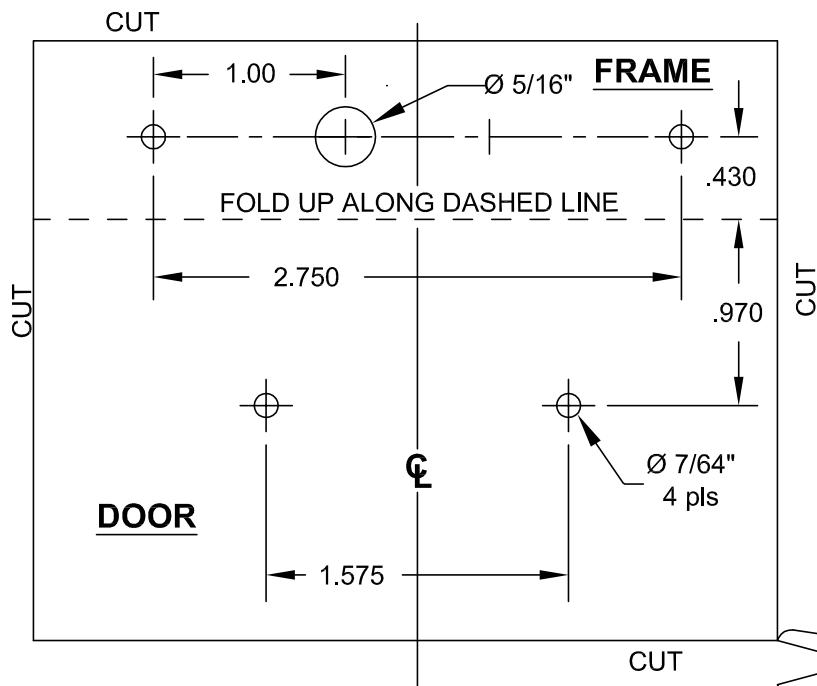
**Detex Corporation**

302 Detex Drive  
New Braunfels, Texas 78130  
(800) 729-3839 Fax: (830) 620-6711  
www.detex.com  
Instruction p/n: 103137, Rev: 6-11-15

## TOP OF DOOR INSTALLATION RECOMMENDED



## TEMPLATE



### STEP 1:

Fold template along dashed line. Place template against door and top of frame so that the centerline is located approximately 6 inches from frame stop. Mark and drill 2 mounting holes in the door and 2 mounting holes and wire routing hole (if required) in the frame as indicated on the template.

### STEP 2:

Remove magnet cover. Use the 2 provided screws and install magnet on the door. Snap cover back in place.

### STEP 3:

Install switch using 2 provided screws, route wires as required. Set air gap to 1/8" recommended. Use shims provided for the switch and/or magnet if necessary. Discard shims not used.

### STEP 4:

Complete wiring and test operation.