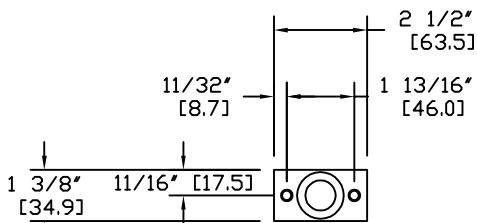
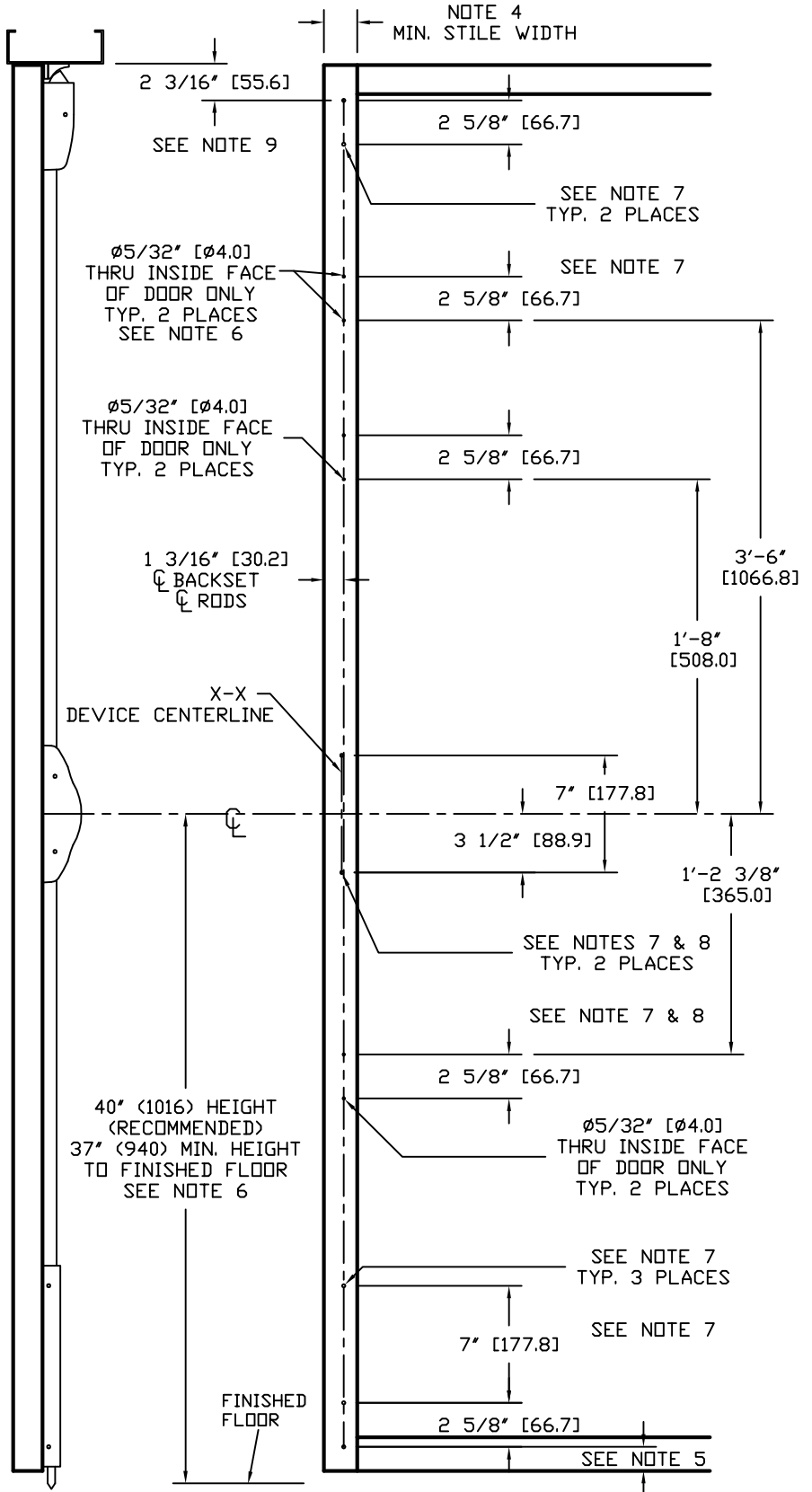


- NOTES:
1. DO NOT SCALE DRAWING.
 2. DIMENSIONS ARE IN INCHES [mm].
 3. LHR DOOR SHOWN.
 4. MINIMUM STILE WIDTH: 2" [50.8].
 5. DIMENSION FROM BOTTOM OF DOOR TO BOTTOM HOLE IS 1-7/16" [36.5] OR, IF A RAISED OR ELEVATED SILL CONDITION EXISTS, MOVE HOLE LOCATION UP BY THE THICKNESS OF THE SILL CONDITION FROM THE BOTTOM OF DOOR.
 6. REQUIRED FOR DOOR HEIGHTS OVER 7'0", OR IF DISTANCE BETWEEN DEVICE CENTER LINE TO TOP OF DOOR EXCEEDS 44".
 7. DRILL & TAP 1/4-20 THREADS THRU INSIDE FACE OF DOOR ONLY. IF REQUIRED, THRU-BOLT HOLE SIZE 9/32" INTERIOR DOOR FACE, AND 3/8" EXTERIOR DOOR FACE.
 8. IF OUTSIDE TRIM IS REQUIRED PLEASE REFER TO OUTSIDE TRIM TEMPLATE.
 9. NOTCH OUT FRAME STOP FOR TOP STRIKE.



96 BOTTOM STRIKE



HDG. _____ DR. _____

RESPONSIBILITY
 Door and Frame Manufacturers are responsible for providing adequate construction or reinforcements for proper installation of hardware shown. All architectural builders hardware must be installed on properly reinforced doors and frames regardless of the type, material or method of construction.

TEMPLATE
 ALUMINUM DOOR
 5001 SERIES
 VERTICAL ROD EXIT DEVICE
 BP-2 MOUNTING PLATE



DO NOT SCALE DRAWING

DATE 3-29-10

TEMPLATE NUMBER T1071