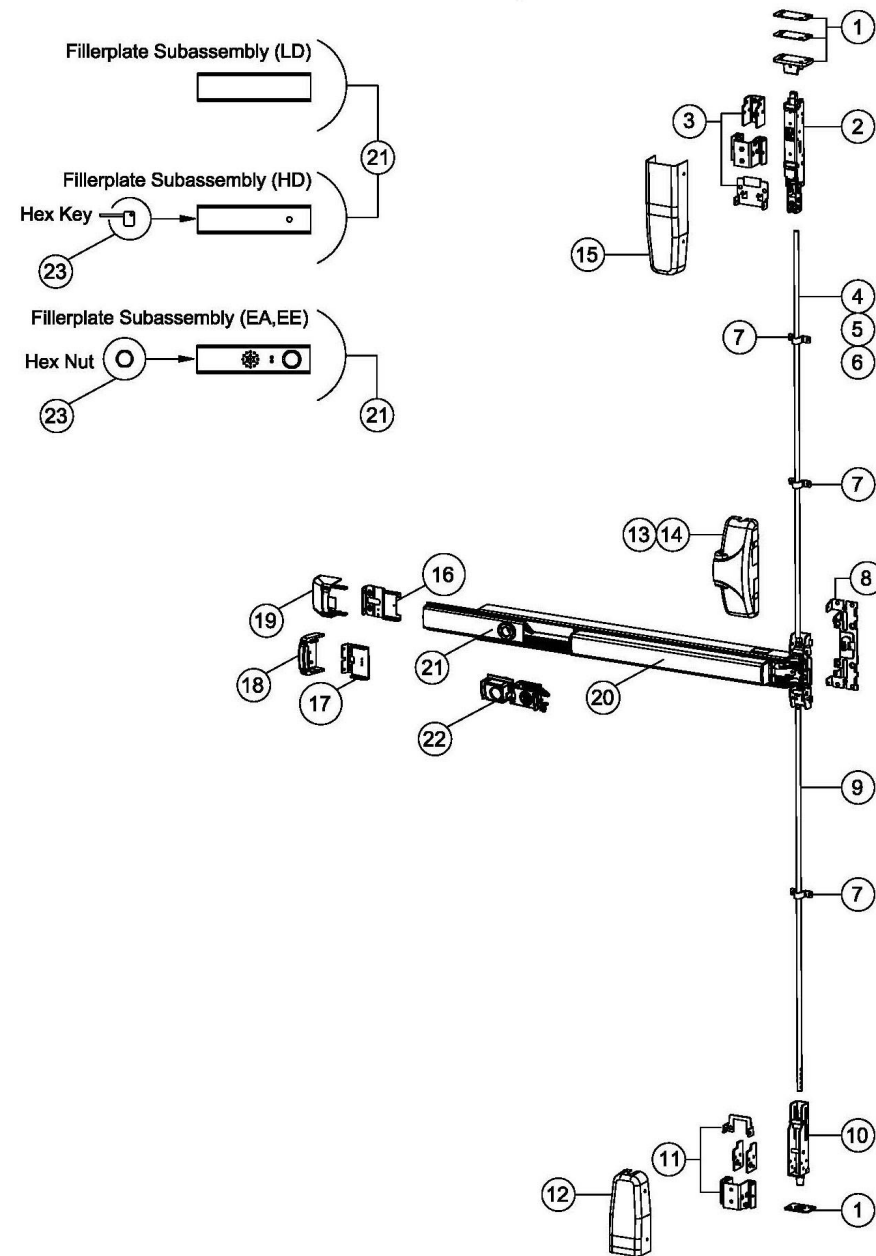




# 27 Series Parts List

For Mechanical Devices Only



Item	Order Part#	Fire QTY	Non-Fire QTY	Description	Price
1	106405-1	1	1	Strike kit, ADV 27	\$129.00
2	105984-3	0	1	Top latch assembly, FEMA, SVR	\$761.00
	105984-4	1	0	Top latch assembly, FEMA, SVR, Fire	\$775.00
3	106407-1	1	1	Top latch mounting kit	\$144.00
4	104051-3	1	1	Top rod, SS, 7'	\$74.00
	104051-4			Top rod, SS, 8'	\$74.00
5	106445	1	1	Top rod, ADV 27, Latch side, 10'	\$189.00
6	106446	1	1	Top rod, ADV 27, Device side, 10'	\$189.00
7	104073-4	1	1	Rod guide kit, ADV 27 (3 rod guide)	\$37.00
8	104171-1	1		Backplate assembly, wide BP11 (03 cam)	\$71.00
	104171-2		1	Backplate assembly, wide BP13 (03 cam)	\$71.00
9	103544	1	1	Bottom rod	\$49.00
10	106140	1	1	Bottom bolt assembly, SVR, FEMA	\$162.00
11	106408-1	1	1	Bottom latch mounting kit, ADV 27	\$104.00
12	106148-9	1	1	Cover, bottom latch, SVR, FEMA, 630	\$123.00
13	106141-9	1	1	Cover, centercase, wide, SVR, SS, 630	\$170.00
14	104640-13	1	1	Cover, centercase, wide, SVR, 628	\$136.34
	104640-14			Cover, centercase, wide, SVR, 693	\$136.34
	104640-15			Cover, centercase, wide, SVR, 695	\$136.34
15	106147-9	1	1	Cover, top latch, SVR, FEMA, 630	\$162.00
16	100147			Endcap mounting bracket, EC1	\$15.75
17	104303	1	1	Flush endcap mounting bracket, EC2	\$41.00
18	104612-1	1	1	Flush endcap, EC2, AL, 628	\$149.00
	104686-1			Flush endcap, EC2, AL, FC, 628	\$130.00
	104304-9			Flush endcap, EC2, SS, 630	\$94.00
	104317-9			Flush endcap, EC2, SS, FC, 630	\$128.00
19	101642-9	1	1	Endcap assembly, EC1, SS, 630	\$101.00
	102095-9			Endcap assembly, EC1, SS, FC, 630	\$157.00
20	105500-190	1	1	S&R Centercase/Pushpad assy	\$657.59
21	100860-78	1	1	S&R Fillerplate subassembly	\$185.39

NOTE: Your particular part or configuration may not be shown: Contact Detex technical support at 800-729-3839 (option 2)

March 8, 2023

